


CITY OF ELLENSBURG

Public Works Department
501 North Anderson Street; Ellensburg, WA 98926
Ph: (509) 962-7230 Fax: (509) 962-7127

Memorandum

Date: December 8, 2022
To: Chace Pedersen, County Planner I
From: Craig Jones, Development Coordinator 
Through: Derek Mayo, City Engineer
Re: SEPA for 1111 E Bowers Rd – SE-22-00065

The following are the City Public Works comments for the proposed Airplane Hanger project on the property at 1111 E bowers Rd.

The applicant can view the City of Ellensburg's Development Standards on the City's website for more information. <http://www.ci.ellensburg.wa.us/index.aspx?NID=339>

At time of civil plan review, Staff will work with the County and the developer's engineer regarding the specific issues related to onsite, roadway and utility improvements.

Water:

A 16" Ductile Iron water main runs in Bowers Rd along the property. There are several 2" stubs to the property for potential use. Any Fire Service or Fire Hydrant placement shall be per Fire Dept. requirements and shall be constructed per City Development standards. Your engineer may need to verify adequate water at all fire hydrants. See attached utility map.

Backflow devices will be required on the new services. Specific issues related to water service and meter locations will be addressed at project civil submittal.

Sewer:

An 8" PVC sewer main runs along the Bowers Rd frontage. There are several 6" sewer stubs to the property for potential use. See attached utility map.

Specific issues related to the sewer main and service connection(s) will be addressed through the projects civil submittals.

Other items:

Any work being done on or around a City utility will require permits and the contractor to have proper insurance and bonding on file with the City.

Additional utility easements may be required for any proposed utility outside of the right of way. Specific issues will be addressed at civil plan submittal.

Cc: File 22-118

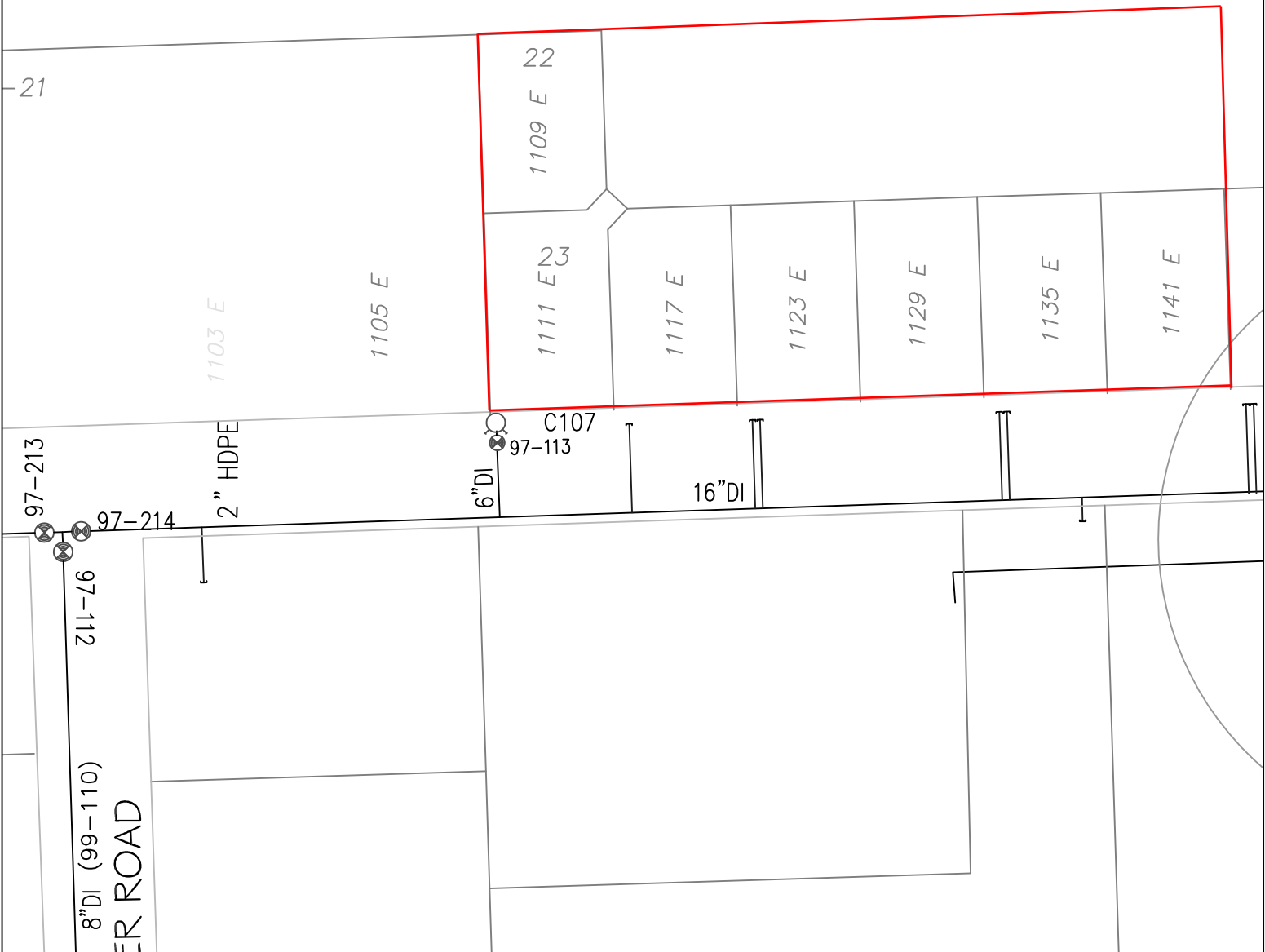




CITY OF ELLENSBURG
PUBLIC WORKS DEPARTMENT
UTILITY MAP REQUEST INFORMATION

W
A
T
E
R

P
O
R
T



DISCLAIMER:
THE CITY OF ELLENSBURG PUBLIC WORKS DEPARTMENT CANNOT VERIFY THE ACCURACY OF THE UTILITIES REPRESENTED ON THIS PLAN. THEY ARE DISPLAYED FOR EASE OF PLANNING AND INSTALLATION AND ARE BASED UPON THE BEST INFORMATION AVAILABLE. CONTRACTORS AND DEVELOPERS SHOULD REFER TO CIVIL PLANS FOR MOST CURRENT DESIGN REVISION AND CALL 811 BEFORE YOU DIG.

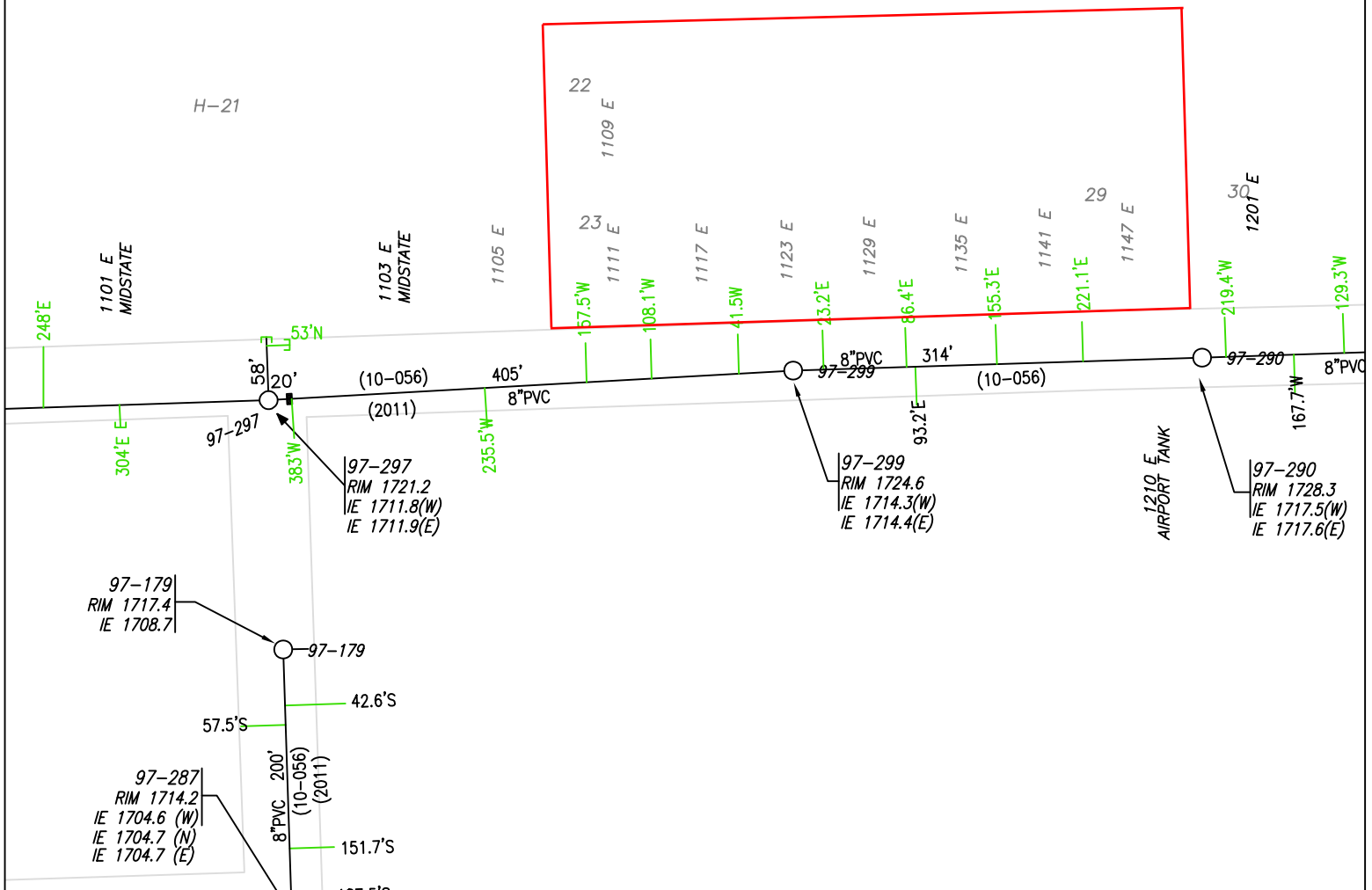




CITY OF ELLENSBURG PUBLIC WORKS DEPARTMENT UTILITY MAP REQUEST INFORMATION

S
E
W
E
R

AIRPORT



DISCLAIMER:

THE CITY OF ELLENSBURG PUBLIC WORKS DEPARTMENT CANNOT VERIFY THE ACCURACY OF THE UTILITIES REPRESENTED ON THIS PLAN. THEY ARE DISPLAYED FOR EASE OF PLANNING AND INSTALLATION AND ARE BASED UPON THE BEST INFORMATION AVAILABLE. CONTRACTORS AND DEVELOPERS SHOULD REFER TO CIVIL PLANS FOR MOST CURRENT DESIGN REVISION AND CALL 811 BEFORE YOU DIG.



Know what's below.
Call before you dig.